

MERRIENAN[®] MELODIES

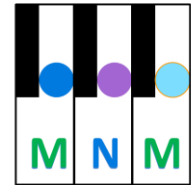
A Colorful Way to Learn Music!

STAFF AND CLEFS FLIP BOOK



MNM [®] MUSIC NOTE CODE						
A	B	C	D	E	F	G
H	I	J	K	L	M	N
O	P	Q	R	S	T	U
V	W	X	Y	Z		
1	2	3	4	5	6	7
8	9	0				

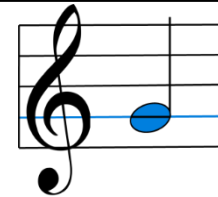
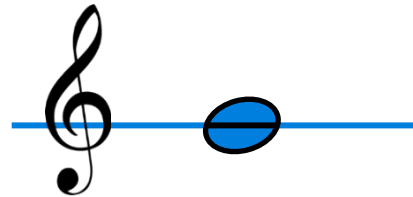
By
NAN FUNKHOUSER, BM and MERRIE SKAGGS, PhD



CLEFS AND HOW THEY WORK

THE THREE CLEFS

G CLEF

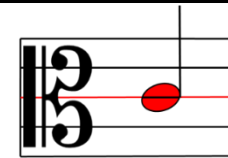
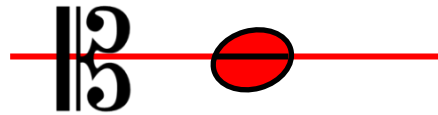


This clef is called the **G** Clef because it circles the line where **G** is found. It is used for writing notes mostly for **MIDDLE C** and above. The G Clef is used for all keyboard instruments and medium to high pitched instruments, such as the violin, flute, and trumpet.

G Clef is also called the Treble Clef when it circles the second line from the bottom.



C CLEF

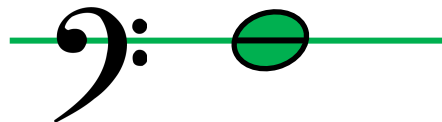


This clef is called a **C** Clef because the line where **C** is found goes through the middle of the clef sign. The **C** Clef is used for instruments such as the trombone and viola. It is almost never used to play keyboard music.

C Clef is also called the Alto Clef when the middle line goes through the middle of the clef.



F CLEF



This clef is called the **F** Clef because the two dots always surround the line where **F** is found. It is used for writing notes mostly for Middle **C** and below. The F Clef is used for all keyboard instruments and medium to low pitched instruments, such as the cello, bassoon, and tuba.



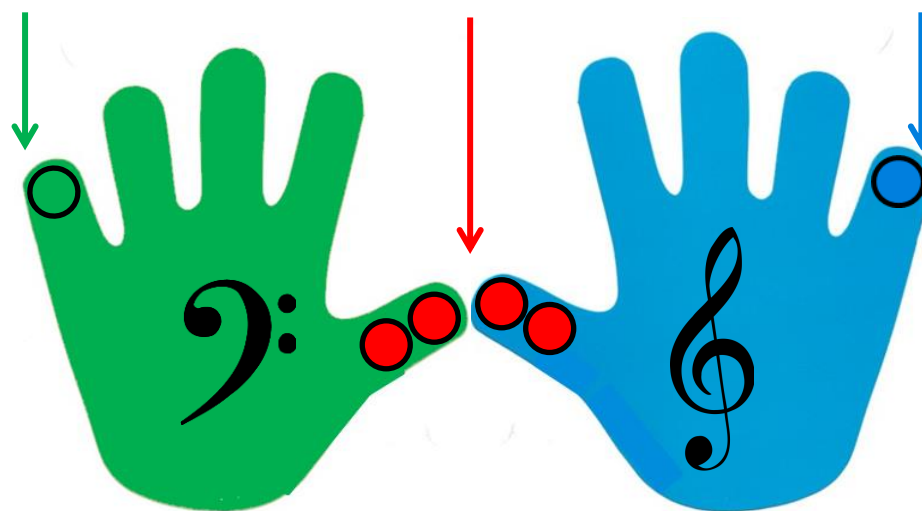
F Clef is also called the Bass Clef when the two dots surround the fourth line from the bottom.

BASS CLEF AND TREBLE CLEF ON THE GRAND STAFF AND ON THE KEYBOARD

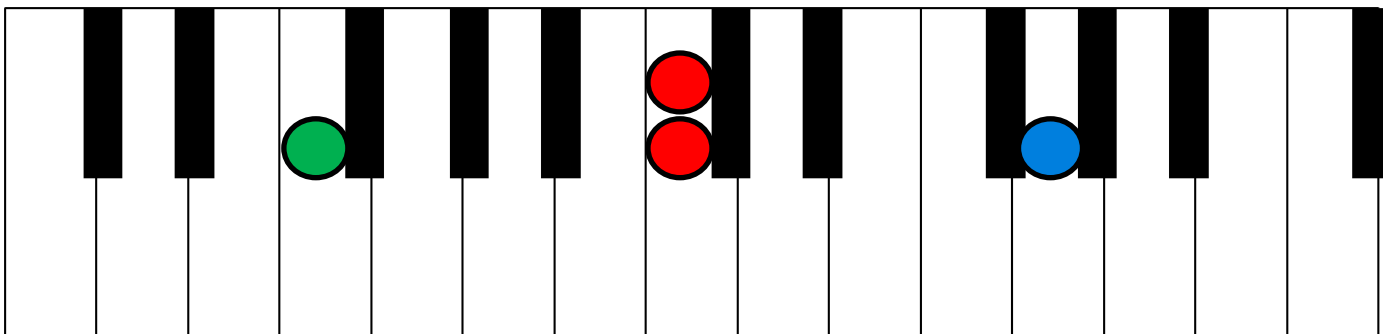
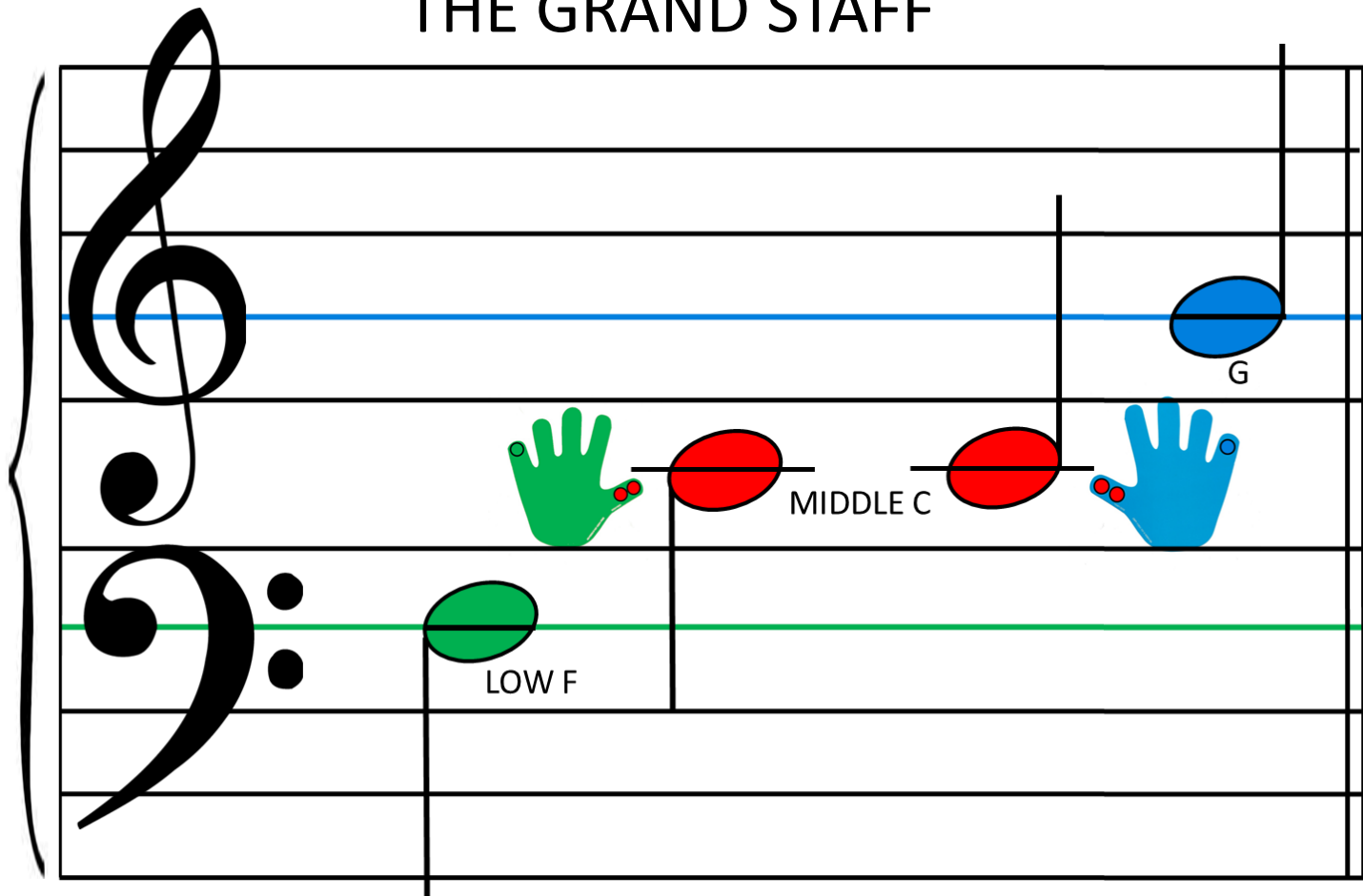
TREBLE

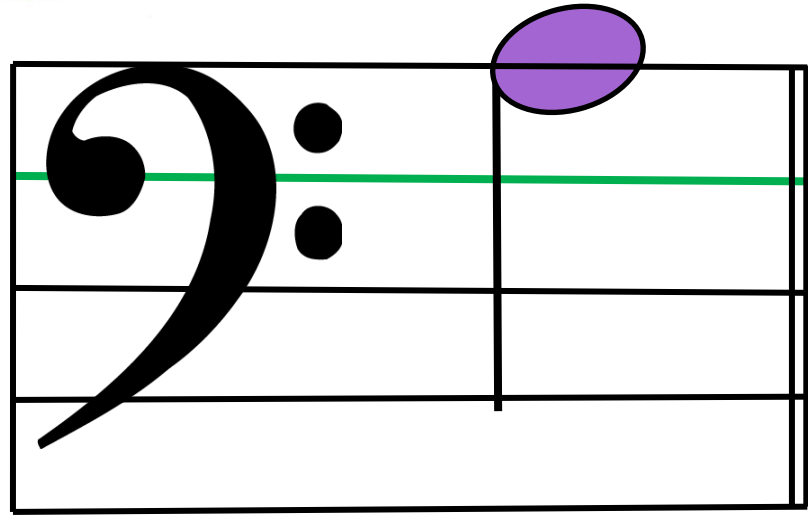
BASS

A diagram of a grand staff with 12 keys labeled C through C. The top staff is the Treble clef and the bottom staff is the Bass clef. The keys are colored: C (red), D (orange), E (yellow), F (green), G (blue), A (purple), B (light blue), C (red), D (orange), E (yellow), F (green), G (blue), A (purple), B (light blue), C (red). The Treble clef staff has notes on the lines: C (first line), D (second space), E (third line), F (fourth space), G (fifth line). The Bass clef staff has notes on the lines: C (first line), D (second space), E (third line), F (fourth space), G (fifth line). The keys are also marked with colored dots: C (red), D (orange), E (yellow), F (green), G (blue), A (purple), B (light blue), C (red), D (orange), E (yellow), F (green), G (blue), A (purple), B (light blue), C (red).

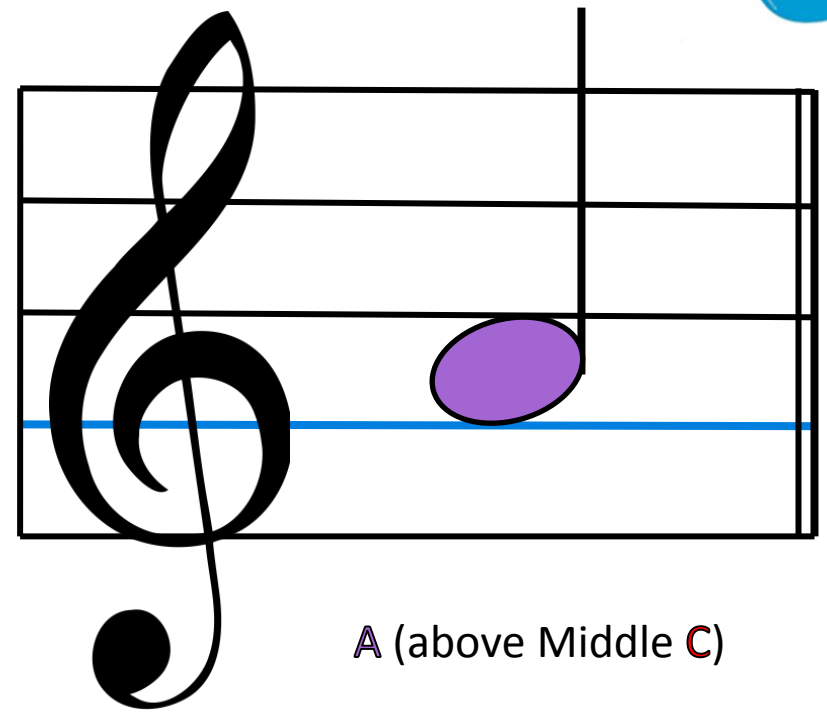


THE GRAND STAFF

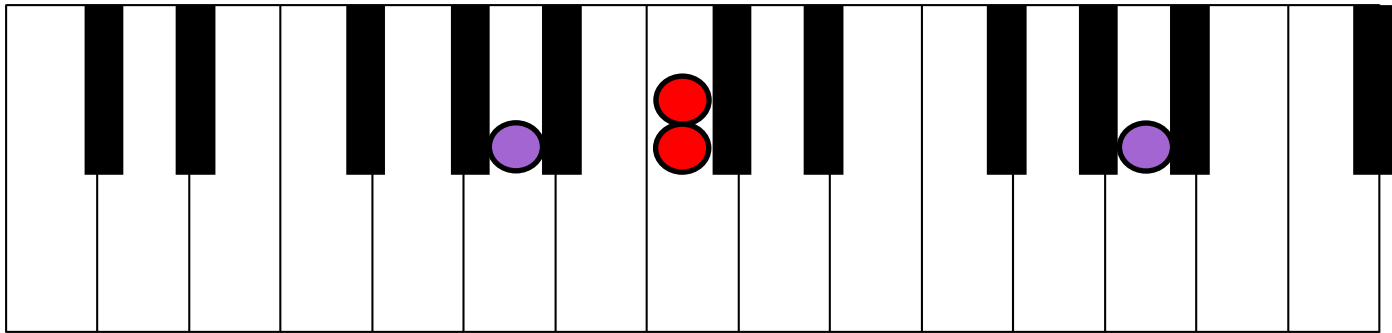




LOW A



A (above Middle C)

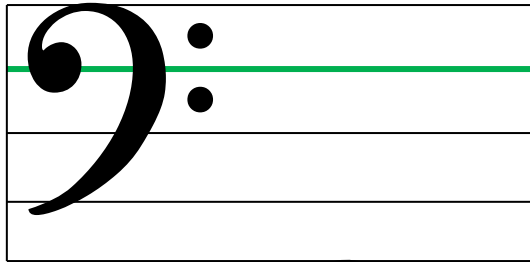




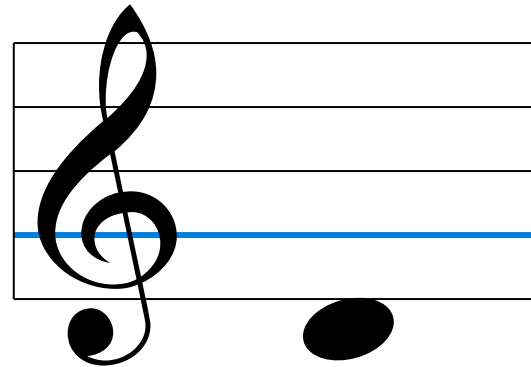
COMPARE THE CLEFS

THE FIVE LINES AND FOUR SPACES

Now look back and forth between the two notes in treble and bass clefs and feel your eyes shift. Do this until the first line BASS CLEF note looks like a Low Low F and the first line TREBLE CLEF note looks like a D.



F



D