

MERRIENAN[®] MELODIES

A Colorful Way to Learn Music!

SHAPES AND NATURE



SONG BOOK ONE of the Song Book Series

MNM[®] MUSIC NOTE CODE

A	B	C	D	E	F	G
H	I	J	K	L	M	N
O	P	Q	R	S	T	U
V	W	X	Y	Z		
1	2	3	4	5	6	7
8	9	0				

By
NAN FUNKHOUSER, BM and MERRIE SKAGGS, PhD

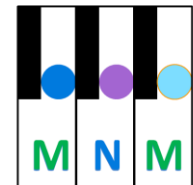
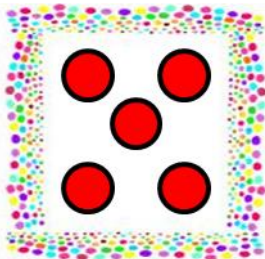
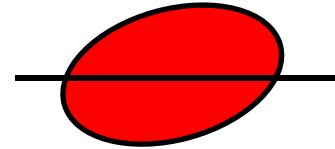
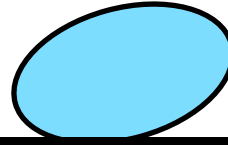
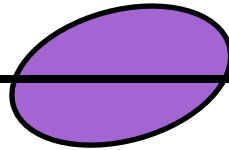
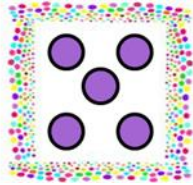


TABLE OF CONTENTS

Polka Dot Song	4
Bubbles Song	6
Polka Dot Song—hands together	8
Bubbles Song—hands together	9
Rising Sun Song	10
Setting Sun Song	12
Rising Sun Song—hands together	14
Setting Sun Song—hands together	15
Balloon Song	16
Lollipop Song	18
Balloon Song—hands together	20
Lollipop Song—hands together	21
Up and Down the Hill Song	22
The Smile Song	24
Up and Down the Hill Song—hands together	26
The Smile Song- hands together	27
The Hilly Song- hands together	28
The Smile and Frown Song--h ands together	29
Ocean Song	30
Mountain Song	32
Ocean Song—hands together	33
Mountain Song—hands together	34



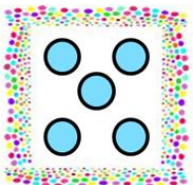
POLKA DOT SONG



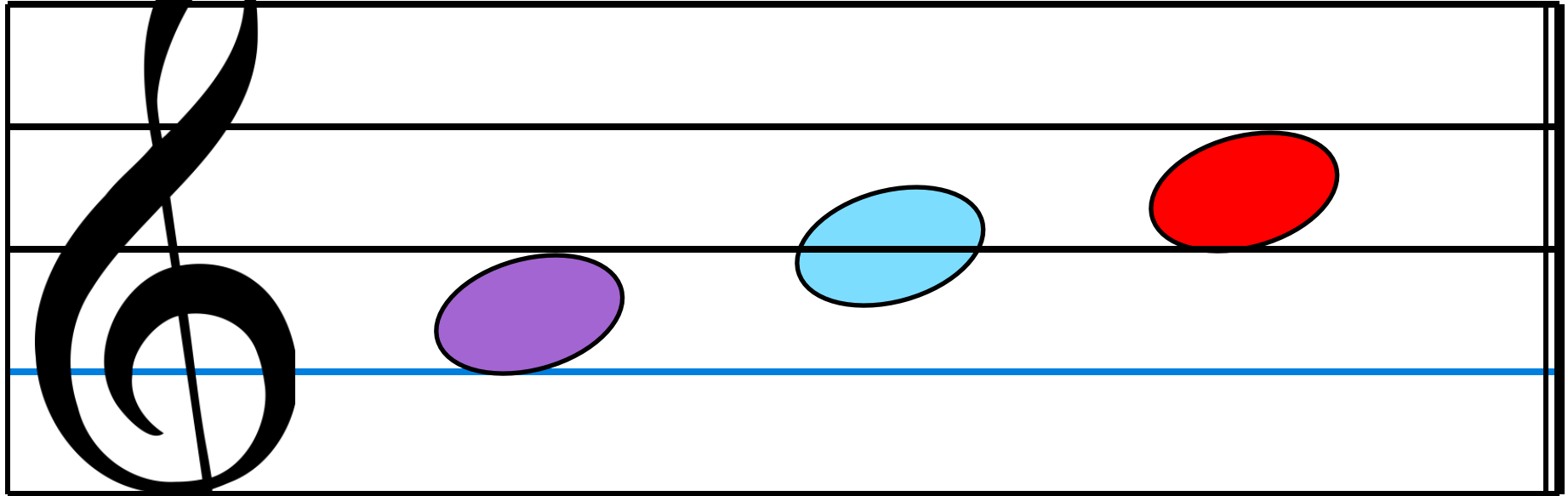
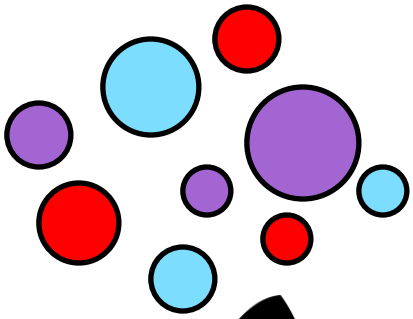
A

B

C



POLKA DOT SONG

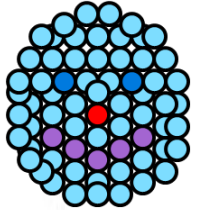


A

B

C

POLKA DOT SONG



A musical staff with a treble clef and a bass clef. The staff is divided into two systems. The top system has a blue middle line, and the bottom system has a green middle line. Various colored ovals and letters are placed on the lines. A blue hand icon is on the top line, and a green hand icon is on the bottom line. Letters A, B, and C are placed on the middle lines. Colored ovals are placed on the lines above and below the middle lines.

THE SMILE AND FROWN SONG

The image displays a musical staff with two systems. The top system uses a treble clef and a blue hand icon. The bottom system uses a bass clef and a green hand icon. The notes are represented by letters E, D, C, and ovals. The ovals are colored yellow, orange, and red. There are also colorful arcs (yellow, orange, red) scattered around the notes. The staff lines are black, with a blue line in the treble system and a green line in the bass system.

System	Clef	Hand Color	Note 1	Note 2	Note 3	Note 4	Note 5	Note 6
1	Treble	Blue	E	D	C	C	D	E
2	Bass	Green	C	D	E	E	D	C