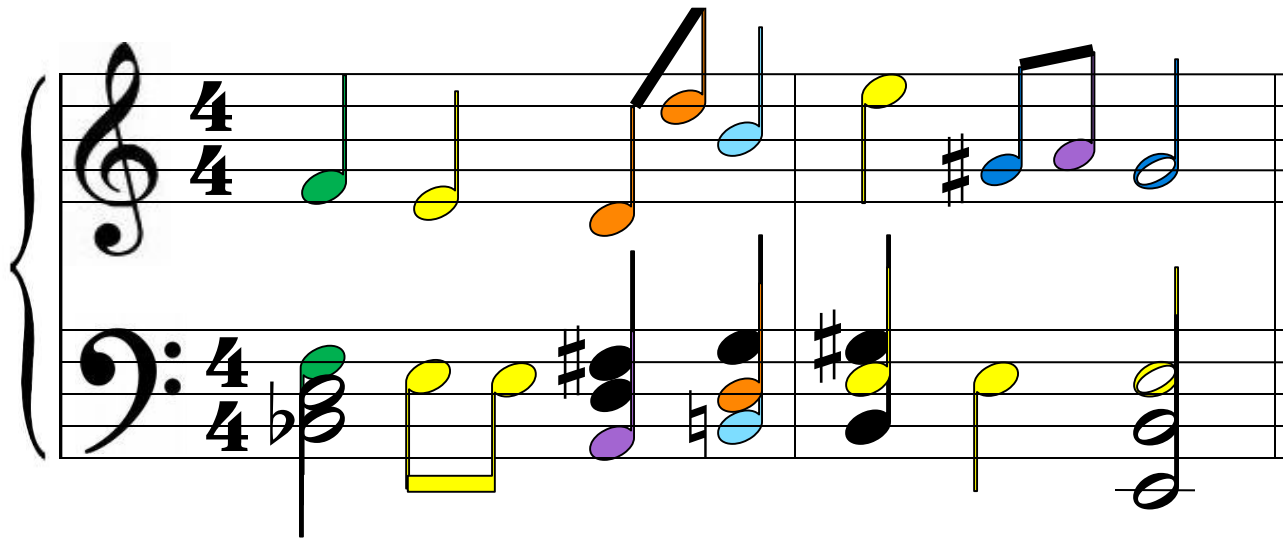


# MERRIENAN<sup>®</sup> MELODIES

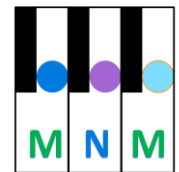
LEARNING TO READ MUSIC BY WRITING AND COMPOSING



A Colorful Way to Learn Music!

Nan Funkhouser, BM and Merrie Skaggs, PhD

MNM EARLYSTART BOOK



# TABLE OF CONTENTS

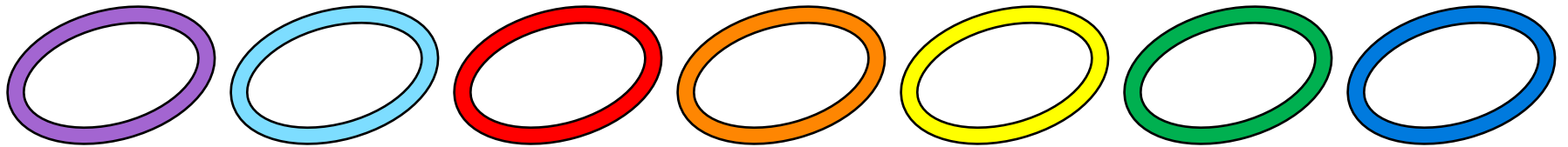
Introduction	3	<b>Songs to Read and Write</b>	
MNM Kit Materials	4	“Mommy Song”	32
Notes to Parents	6	“Daddy Song”	40
<b>MerrieNan® Melodies Method</b>		<b>Songs to Compose, Write, and Read</b>	
Learning Letters and Notes	7	“My Age Song”	46
Colored Keyboard and Music Note Code	8	“My Friend’s Name Song”	48
Name Song Example: “Anna Song”	9	“My Favorite Animal Song”	50
“My Name Song”	10	<b>Spin A Song</b>	52
<b>Notes, Staff, and Clefs</b>		<b>Pick A Note Song</b>	54
Line Notes and Space Notes	12	<b>Let’s Add Rhythm</b>	56
The Staff- 5 Lines and 4 Spaces	13	<b>More Songs to Compose, Write, and Read</b>	
Making Your Eyes Shift	14	“My Birthday Song”	58
Clefs and How They Work	15	“My Favorite Color Song”	59
Bass Clef (F Clef)	16	“My Phone Number Song”	60
Treble Clef (G Clef)	17	“My Favorite Food Song”	61
Bass Clef Notes	18	“My Favorite Number Song”	62
Treble Clef Notes	20	“The Anything Song”	63
The Grand Staff	22	<b>Pentatonic Scale Improvisation</b>	64
Treble and Bass Clef Notes	24	“ Surprise Song”	65
“The Rainbow Song”	25		
<b>Five Finger Hand Position Songs</b>			
“Both Hands Close Together”	26		
“Both Hands Far Apart”	27		
“The Five Finger Song”	28		

# LEARNING LETTERS AND NOTES

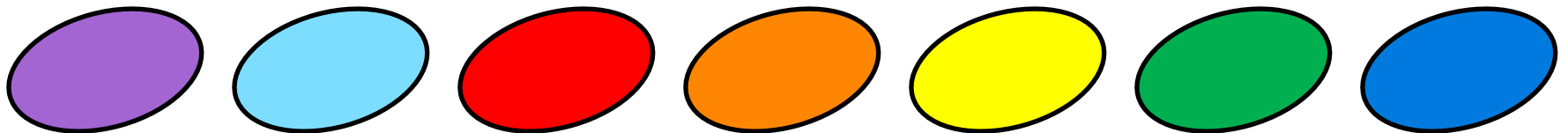
Write the first 7 letters of the alphabet. These are the notes you will use to make music. Use purple for A, sky blue for B, red for C, orange for D, yellow for E, green for F, and blue for G.



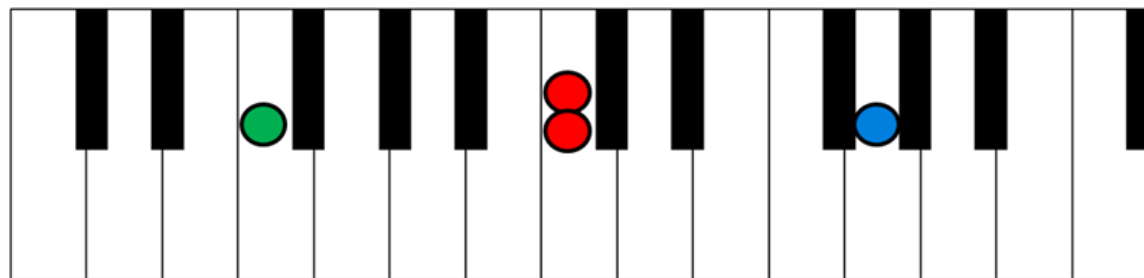
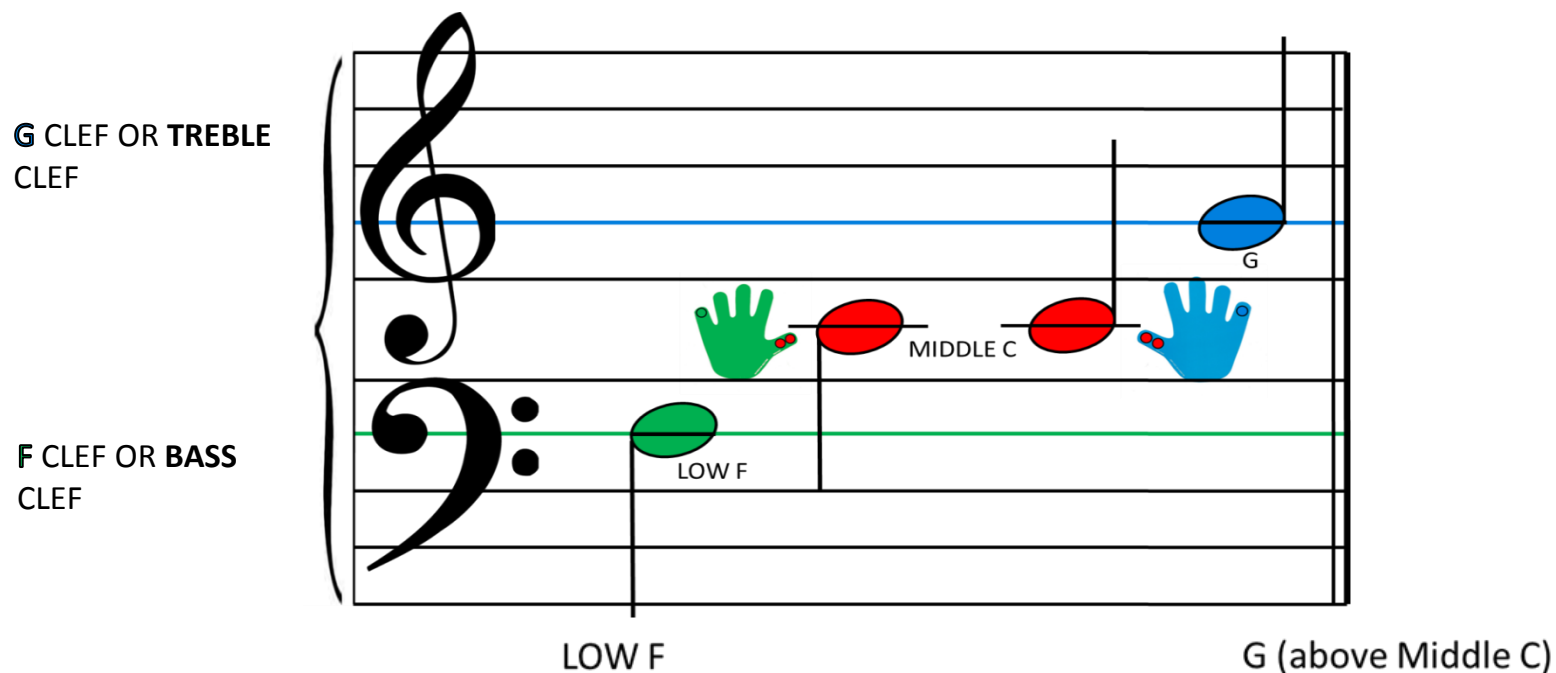
Now color in the notes below with the correct colors.



When you are done, it will look like this!



# THE GRAND STAFF

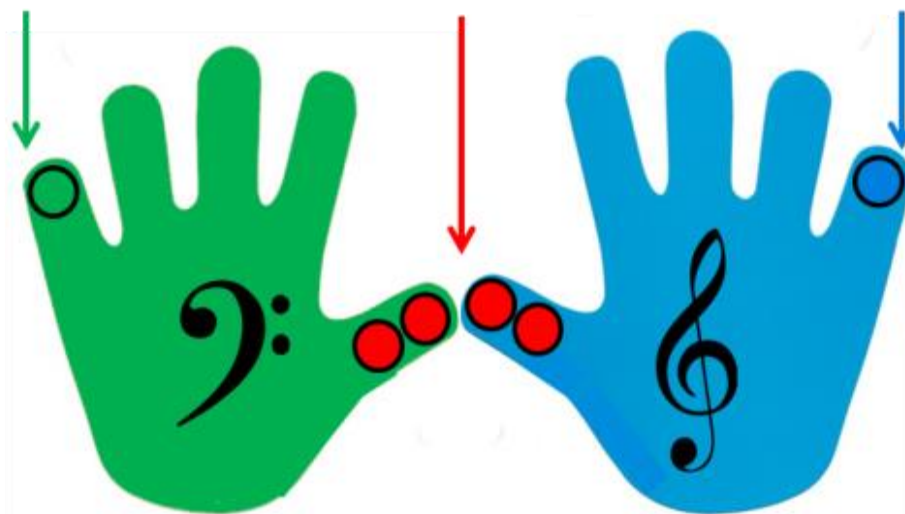


Middle C needs a ledger line through it. A ledger line is a piece of an imaginary line that is written for notes above and below the staff.

# THE GRAND STAFF

The diagram shows a piano keyboard with keys labeled C, D, E, F, G, A, B, C, D, E, F, G, A, B, C. Below the keyboard is a grand staff with a treble clef and a bass clef. Notes are placed on the staff corresponding to the keys: C (white), D (white), E (white), F (green), G (white), A (white), B (white), C (red), D (white), E (white), F (white), G (blue), A (white), B (white), C (white).

TREBLE  
BASS



Color the notes in on the keyboard and on the staff!

# MOMMY SONG



MOMMY in MNM Music Code: \_\_\_\_\_

TREBLE CLEF

When you play the song, sharp the F's to make the song sound happy.

Musical notation for the 'MOMMY SONG' in treble clef. The staff shows a treble clef, a key signature of one sharp (F#), and a melody of F#, A, F#, F#, D. The notes are represented by colored ovals: F# (green), A (purple), F# (green), F# (green), and D (orange). Below the staff, the notes are written as text: F# (green), A (purple), F# (green), F# (green), and D (orange). The D note is also shown in an orange oval above the staff.

# LET'S ADD RHYTHM

## NOTES

### WHOLE NOTE

gets 4 beats



1

2

3

4

### HALF NOTE

gets 2 beats



1

2



3

4

### QUARTER NOTE

gets one beat



1



2



3



4